

# MUSIC THEORY

SESSION 1 – Notes and Scales



# Major Scale

- A Major scale consist of eight (8) notes

# Major Scale

- A Major scale consist of eight (8) notes
- The interval between the first two notes is a **whole** step

# Major Scale

- A Major scale consist of eight (8) notes
- The interval between the first two notes is a whole step The interval between the second and third note is a **whole** step

# Major Scale

- A Major scale consist of eight (8) notes
- The interval between the first two notes is a whole step
- The interval between the second and third note is a whole step
- The interval between the third and fourth note is a **half** step

# Major Scale

- A Major scale consist of eight (8) notes
- The interval between the fourth and fifth note is a **whole** step

# Major Scale

- A Major scale consist of eight (8) notes
- The interval between the fourth and fifth note is a whole step
- The interval between the fifth and sixth note is a **whole** step

# Major Scale

- A Major scale consist of eight (8) notes
- The interval between the fourth and fifth note is a whole step
- The interval between the fifth and sixth note is a whole step
- The interval between the sixth and seventh note is a **whole** step

# Major Scale

- A Major scale consist of eight (8) notes
- The interval between the fourth and fifth note is a whole step
- The interval between the fifth and sixth note is a whole step
- The interval between the sixth and seventh note is a whole step
- The interval between the seventh and eighth note is a **half** step

# Major Scale

- For the intervals that gives us steps of:
  - Whole
  - Whole
  - Half
  - Whole
  - Whole
  - Whole
  - Half

Whole-Whole-Half-Whole-Whole-Whole-Half

# Major Scale

- This is frequently indicated as:
- 1 1  $\frac{1}{2}$  1 1 1  $\frac{1}{2}$

# Major Scale

- Let's look at a C major scale

# Major Scale

- Let's look at a C major scale
- We start with a "C" note

# Major Scale

- Let's look at a C major scale
- We start with a “C” note
- The next note is a **whole** step above C

# Major Scale

- Let's look at a C major scale
- We start with a "C" note
- The next note is a whole step above C
- What note is that?

# Major Scale

- Let's look at a C major scale
- We start with a "C" note
- The next note is a whole step above C
- What note is that?
- D

# Major Scale

- Let's look at a C major scale
- So far we have C and D

# Major Scale

- Let's look at a C major scale
- So far we have C and D
- The next interval is a **whole** step above D

# Major Scale

- Let's look at a C major scale
- So far we have C and D
- The next interval is a whole step above D
- What note is that?

# Major Scale

- Let's look at a C major scale
- So far we have C and D
- The next interval is a whole step above D
- What note is that?
- E

# Major Scale

- Let's look at a C major scale
- We now have C D E

# Major Scale

- Let's look at a C major scale
- We now have C D E
- The next interval is a **half** step above E

# Major Scale

- Let's look at a C major scale
- We now have C D E
- The next interval is a half step above E
- What note is that?

# Major Scale

- Let's look at a C major scale
- We now have C D E
- The next interval is a half step above E
- What note is that?
- F

# Major Scale

- Let's look at a C major scale
- We now have C D E F

# Major Scale

- Let's look at a C major scale
- We now have C D E F
- The next interval is a **whole** step above F

# Major Scale

- Let's look at a C major scale
- We now have C D E F
- The next interval is a whole step above F
- What note is that?

# Major Scale

- Let's look at a C major scale
- We now have C D E F
- The next interval is a whole step above F
- What note is that?
- G

# Major Scale

- Let's look at a C major scale
- We now have C D E F G

# Major Scale

- Let's look at a C major scale
- We now have C D E F G
- The next interval is a **whole** step above G

# Major Scale

- Let's look at a C major scale
- We now have C D E F G
- The next interval is a whole step above G
- What note is that?

# Major Scale

- Let's look at a C major scale
- We now have C D E F G
- The next interval is a whole step above G
- What note is that?
- A

# Major Scale

- Let's look at a C major scale
- We now have C D E F G A

# Major Scale

- Let's look at a C major scale
- We now have C D E F G A
- The next interval is a **whole** step above A

# Major Scale

- Let's look at a C major scale
- We now have C D E F G A
- The next interval is a whole step above A
- What note is that?

# Major Scale

- Let's look at a C major scale
- We now have C D E F G A
- The next interval is a whole step above A
- What note is that?
- **B**

# Major Scale

- Let's look at a C major scale
- We now have C D E F G A B

# Major Scale

- Let's look at a C major scale
- We now have C D E F G A B
- The next (and final) interval is a **half** step above B

# Major Scale

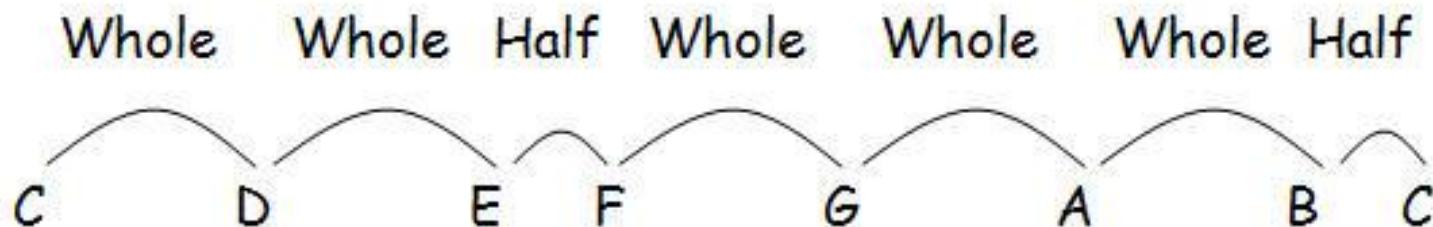
- Let's look at a C major scale
- We now have C D E F G A B
- The next (and final) interval is a half step above B
- What note is that? (This is an easy one)

# Major Scale

- Let's look at a C major scale
- We now have C D E F G A B
- The next (and final) interval is a half step above B
- What note is that?
- C

# Major Scale

- Let's look at a C major scale
- We now have C D E F G A B C
- The intervals are 1 1  $\frac{1}{2}$  1 1 1  $\frac{1}{2}$



# Major Scale

- Let's look at a G scale

# Major Scale

- Let's look at a G scale
- We could go through the same logic we did for the C scale, but let's simplify it.

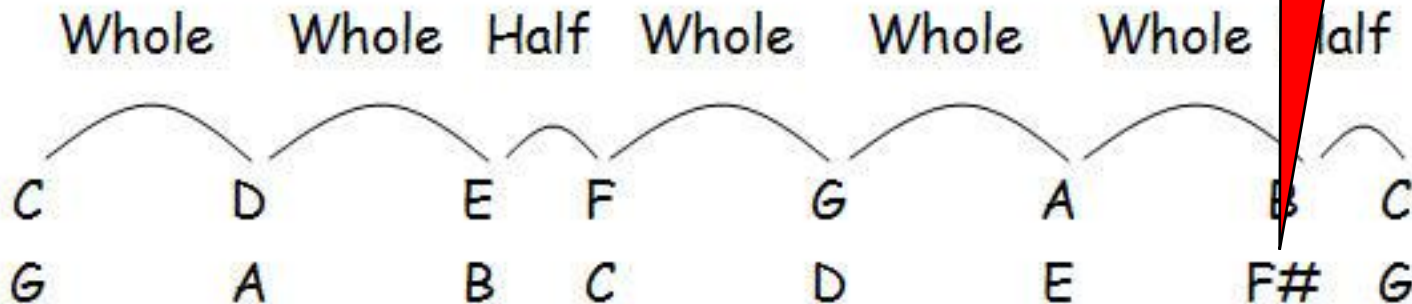
# Major Scale

- Let's look at a G scale
- We could go through the same logic we did for the C scale, but let's simplify it.
- We have the C scale so we will write underneath it a G scale

# Major Scale

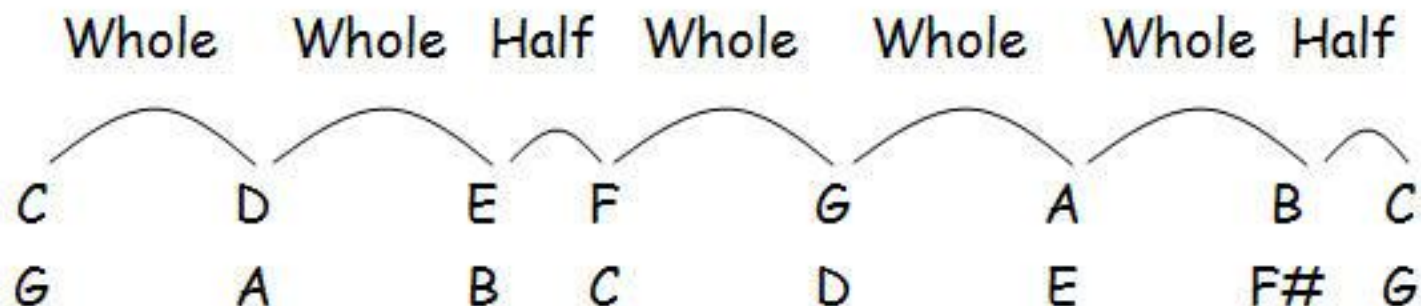
- Let's look at a G scale
- We could go through the same logic we did for the C scale, but let's simplify
- We have the C scale so we will write it underneath it a G scale

Look at how we changed the F to an F#



# Major Scale

- Let's look at a G scale
- Why did we have to make the F into an F#?

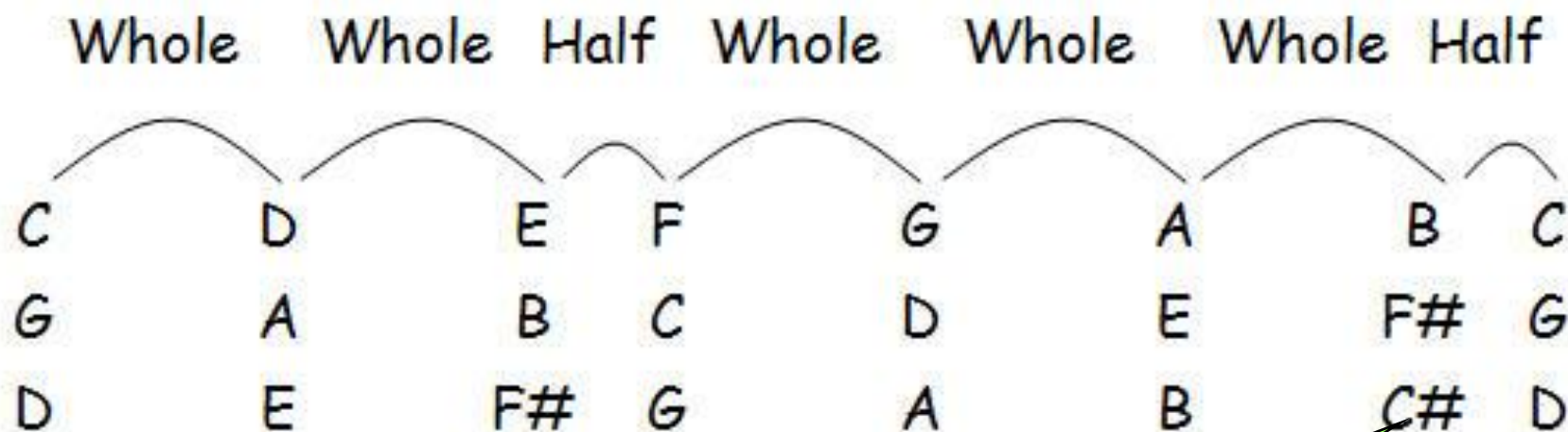


# Major Scale

- Let's look at a D scale

# Major Scale

- Let's look at a D scale



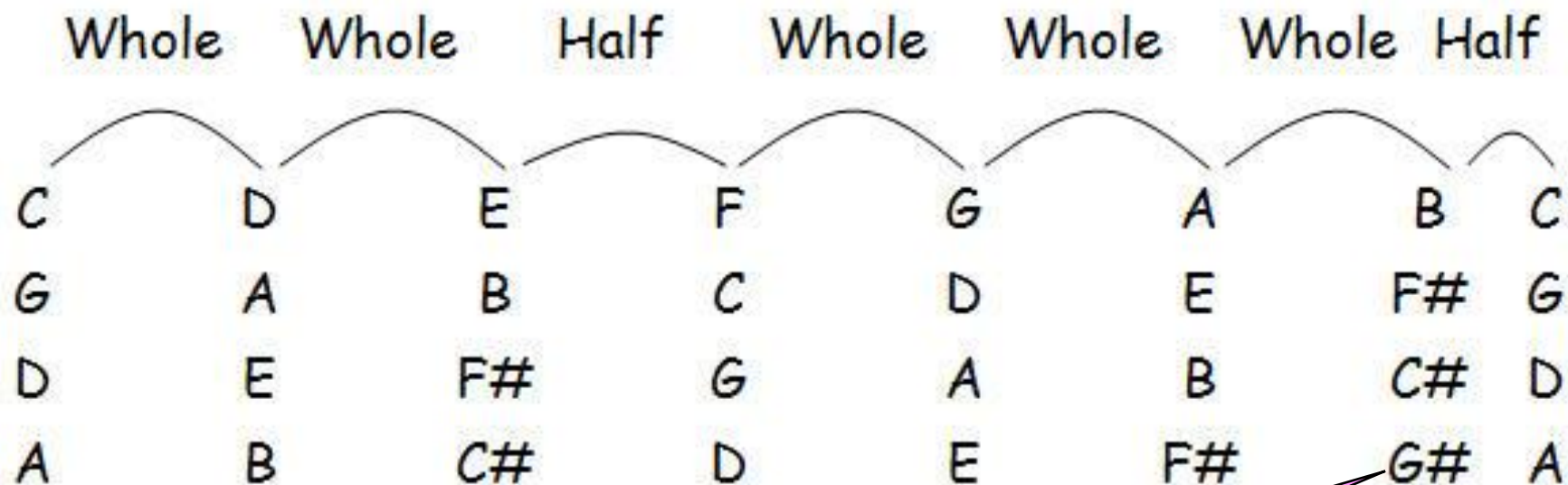
Look at how we changed the C to an C# also notice that it is in the same location as the change to F#

# Major Scale

- Let's look at a A scale

# Major Scale

- Let's look at a A scale



Again we raise the penultimate note a half step

# Major Scale

- You see the pattern by now

# Major Scale

- You see the pattern by now
- We're at the C→F# scales

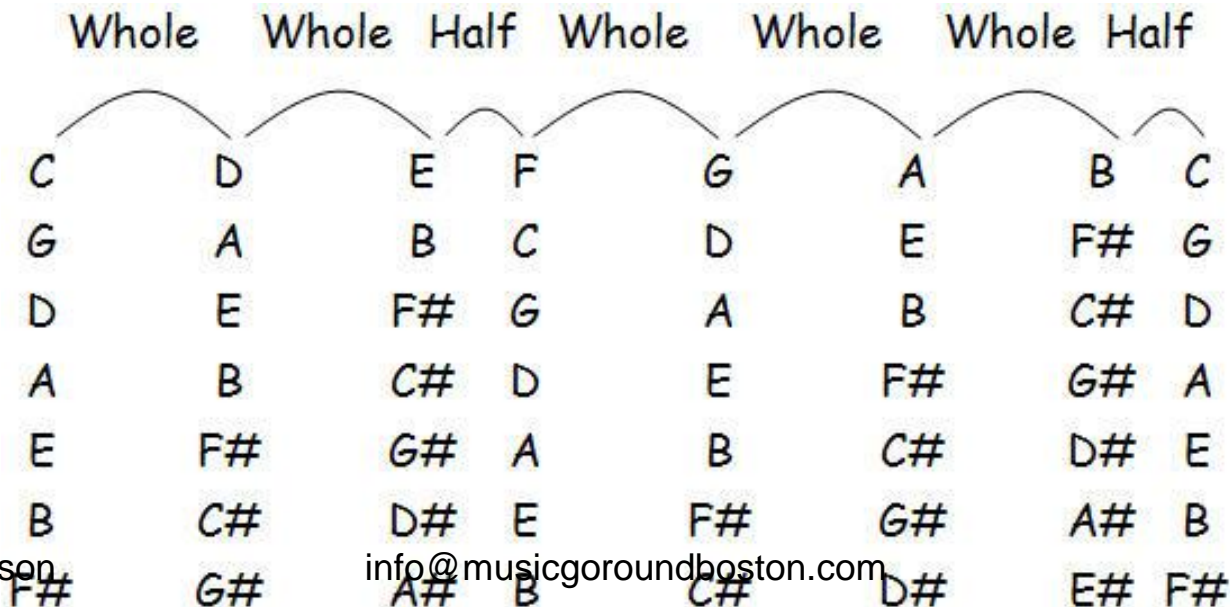
# Major Scale

- You see the pattern by now
- Were at the C→F# scales

|    | Whole | Whole | Half | Whole | Whole | Whole | Half |    |    |    |    |    |    |    |   |
|----|-------|-------|------|-------|-------|-------|------|----|----|----|----|----|----|----|---|
|    | C     |       | D    |       | E     |       | F    |    | G  |    | A  |    | B  |    | C |
| G  | A     | B     | C    | D     | E     | F#    | G    | A  | B  | C# | D  | E  | F# | G  |   |
| D  | E     | F#    | G    | A     | B     | C#    | D    | E  | F# | G# | A  | B  | C# | D  |   |
| A  | B     | C#    | D    | E     | F#    | G#    | A    | B  | C# | D# | E  | F# | G# | A  |   |
| E  | F#    | G#    | A    | B     | C#    | D#    | E    | F# | G# | A# | B  | C# | D# | E  |   |
| B  | C#    | D#    | E    | F#    | G#    | A#    | B    | C# | D# | E# | F# | G# | A# | B  |   |
| F# | G#    | A#    | B    | C#    | D#    | E#    | F#   | G# | A# | B  | C# | D# | E# | F# |   |

# Major Scale

- Three things to observe
  - Once we add an accidental (sharp or flat) it remains
  - We always add the sharp to the seventh tone
  - The last half of the above scale is the first half of the below scale



# Major Scale

- Let's look at an F scale
- We start with an F note

# Major Scale

- Let's look at an F scale
- We start with an F note
- The next tone is a **whole** step up - **G**

# Major Scale

- Let's look at an F scale
- We start with an F note
- The next tone is a whole step up – G
- The next tone is a **whole** step up – **A**

# Major Scale

- Let's look at an F scale
- We start with an F note
- The next tone is a whole step up – G
- The next tone is a whole step up – A
- The next tone is a **half** step up – **Bb**

# Major Scale

- Let's look at an F scale
- We start with an F note
- The next tone is a whole step up – G
- The next tone is a whole step up – A
- The next tone is a **half** step up – **Bb**
- **Why Bb – why not B?**

# Major Scale

- Let's look at an F scale
- We start with an F note
- The next tone is a whole step up – G
- The next tone is a whole step up – A
- The next tone is a half step up – B $\flat$
- The next tone is a **whole** step up – **C**

# Major Scale

- Let's look at an F scale
- We start with an F note
- The next tone is a whole step up – G
- The next tone is a whole step up – A
- The next tone is a half step up – B $\flat$
- The next tone is a whole step up – C
- The next tone is a **whole** step up – **D**

# Major Scale

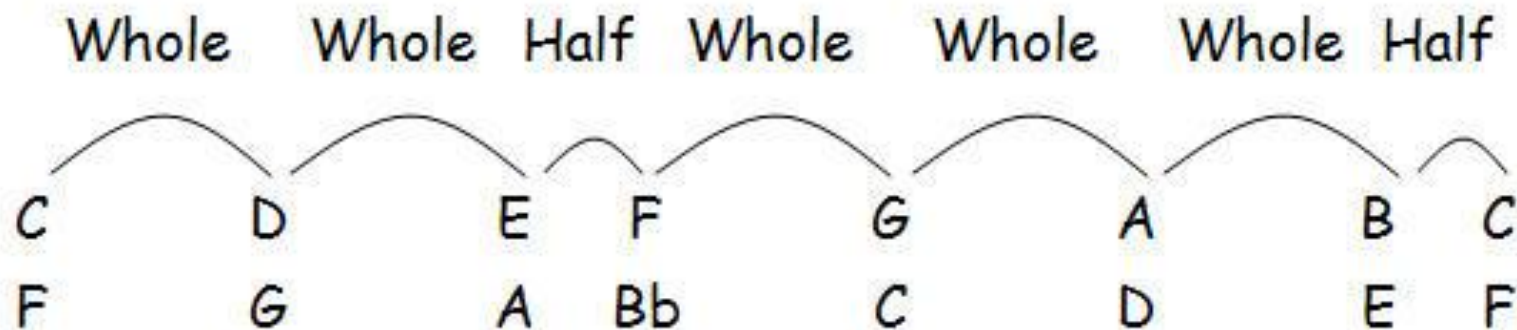
- Let's look at an F scale
- We start with an F note
- The next tone is a whole step up – G
- The next tone is a whole step up – A
- The next tone is a half step up – B $\flat$
- The next tone is a whole step up – C
- The next tone is a whole step up – D
- The next tone is a **whole** step up – **E**

# Major Scale

- Let's look at an F scale
- We start with an F note
- The next tone is a whole step up – G
- The next tone is a whole step up – A
- The next tone is a half step up – B $\flat$
- The next tone is a whole step up – C
- The next tone is a whole step up – D
- The next tone is a whole step up – E
- The next tone is a **half** step up – **F**

# Major Scale

- Let's look at an F scale
- C and F scale



# Major Scale

- Let's look at an Bb scale

# Major Scale

- Let's look at an Bb scale
- Start with a Bb note

# Major Scale

- Let's look at an Bb scale
- Start with a Bb note
- The next tone is a **whole** step up – **C**

# Major Scale

- Let's look at an Bb scale
- Start with a Bb note
- The next tone is a whole step up – C
- The next tone is a **whole** step up – **D**

# Major Scale

- Let's look at an Bb scale
- Start with a Bb note
- The next tone is a whole step up – C
- The next tone is a whole step up – D
- The next tone is a **half** step up – **Eb**

# Major Scale

- Let's look at an Bb scale
- Start with a Bb note
- The next tone is a whole step up – C
- The next tone is a whole step up – D
- The next tone is a half step up – Eb
- The next tone is a **whole** step up – **F**

# Major Scale

- Let's look at an Bb scale
- Start with a Bb note
- The next tone is a whole step up – C
- The next tone is a whole step up – D
- The next tone is a half step up – Eb
- The next tone is a whole step up – F
- The next tone is a **whole** step up – **G**

# Major Scale

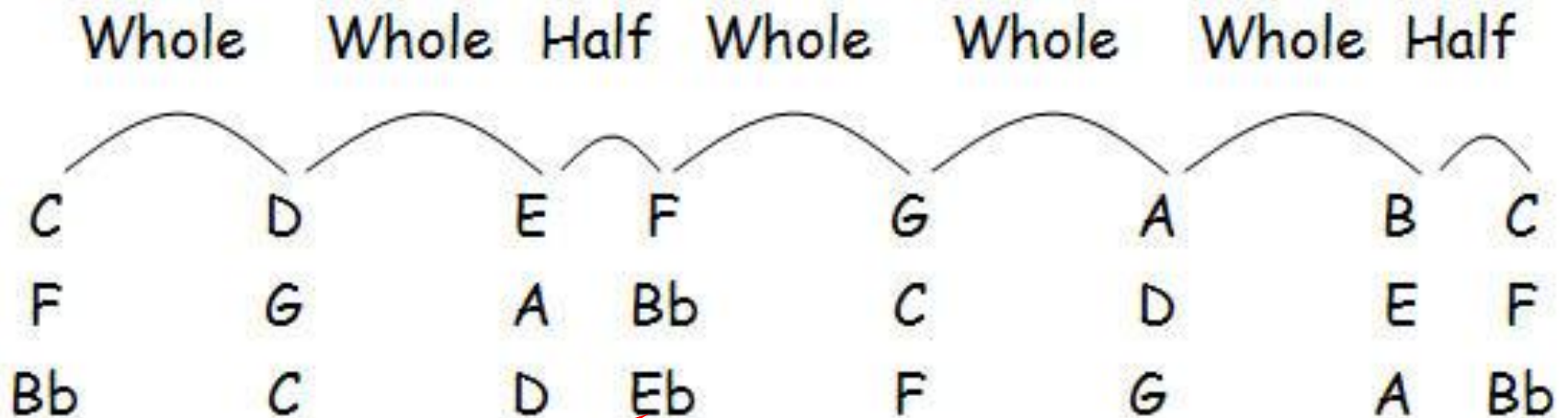
- Let's look at an Bb scale
- Start with a Bb note
- The next tone is a whole step up – C
- The next tone is a whole step up – D
- The next tone is a half step up – Eb
- The next tone is a whole step up – F
- The next tone is a whole step up – G
- The next tone is a **whole** step up – **A**

# Major Scale

- Let's look at an Bb scale
- Start with a Bb note
- The next tone is a whole step up – C
- The next tone is a whole step up – D
- The next tone is a half step up – Eb
- The next tone is a whole step up – F
- The next tone is a whole step up – G
- The next tone is a whole step up – A
- The next tone is a **half** step up – **Bb**

# Major Scale

- Let's look at an Bb scale
- C F Bb scales



Look at how we changed the E to an Eb also notice that it is in the same location as the change to Bb

James Robinson

info@musicgroundboston.com

74

# Major Scale

- You get the idea by now here are all the flatted scales

|  | Whole     | Whole     | Half      | Whole     | Whole     | Whole     | Half |           |
|--|-----------|-----------|-----------|-----------|-----------|-----------|------|-----------|
|  | C         | D         | E         | F         | G         | A         | B    | C         |
|  | F         | G         | A         | B $\flat$ | C         | D         | E    | F         |
|  | B $\flat$ | C         | D         | E $\flat$ | F         | G         | A    | B $\flat$ |
|  | E $\flat$ | F         | G         | A $\flat$ | B $\flat$ | C         | D    | E $\flat$ |
|  | A $\flat$ | B $\flat$ | C         | D $\flat$ | E $\flat$ | F         | G    | A $\flat$ |
|  | D $\flat$ | E $\flat$ | F         | G $\flat$ | A $\flat$ | B $\flat$ | C    | D $\flat$ |
|  | G $\flat$ | A $\flat$ | B $\flat$ | C $\flat$ | D $\flat$ | E $\flat$ | F    | G $\flat$ |

# Major Scale

- All 12 scales

|    | Whole | Whole | Half | Whole | Whole | Whole | Half |  |
|----|-------|-------|------|-------|-------|-------|------|--|
| C  | D     | E     | F    | G     | A     | B     | C    |  |
| G  | A     | B     | C    | D     | E     | F#    | G    |  |
| D  | E     | F#    | G    | A     | B     | C#    | D    |  |
| A  | B     | C#    | D    | E     | F#    | G#    | A    |  |
| E  | F#    | G#    | A    | B     | C#    | D#    | E    |  |
| B  | C#    | D#    | E    | F#    | G#    | A#    | B    |  |
| F# | G#    | A#    | B    | C#    | D#    | E#    | F#   |  |
| F  | G     | A     | Bb   | C     | D     | E     | F    |  |
| Bb | C     | D     | Eb   | F     | G     | A     | Bb   |  |
| Eb | F     | G     | Ab   | Bb    | C     | D     | Eb   |  |
| Ab | Bb    | C     | Db   | Eb    | F     | G     | Ab   |  |
| Db | Eb    | F     | Gb   | Ab    | Bb    | C     | Db   |  |
| Gb | Ab    | Bb    | Cb   | Db    | Eb    | F     | Gb   |  |

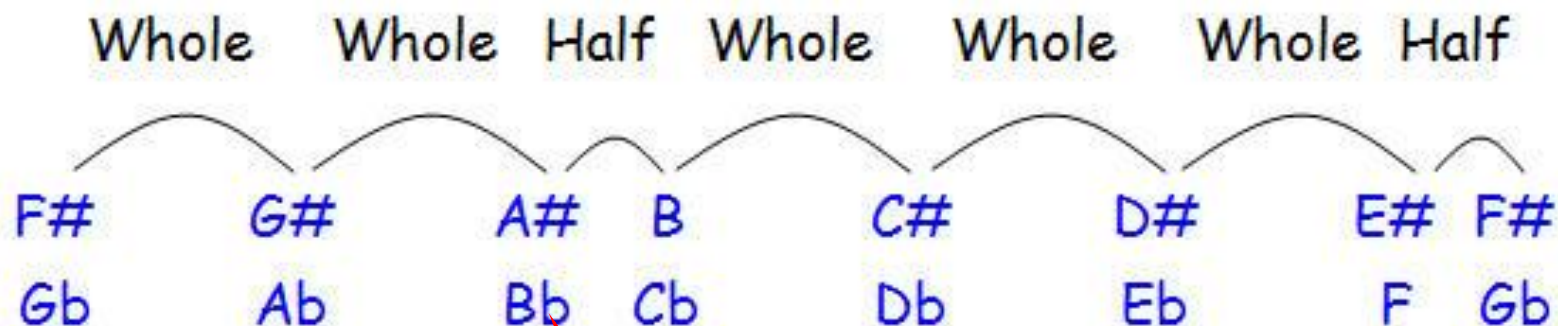
# Major Scale

Are there 12 scales or 13 scales?

|  | Whole | Whole | Half | Whole | Whole | Whole | Half |  |
|--|-------|-------|------|-------|-------|-------|------|--|
|  | C     |       | D    |       | E     |       | F    |  |
|  | G     |       | A    |       | B     |       | C    |  |
|  | D     |       | E    |       | F#    |       | G    |  |
|  | A     |       | B    |       | C#    |       | D    |  |
|  | E     |       | F#   |       | G#    |       | A    |  |
|  | B     |       | C#   |       | D#    |       | E    |  |
|  | F#    |       | G#   |       | A#    |       | B    |  |
|  | F     |       | G    |       | A     |       | Bb   |  |
|  | Bb    |       | C    |       | D     |       | Eb   |  |
|  | Eb    |       | F    |       | G     |       | Ab   |  |
|  | Ab    |       | Bb   |       | C     |       | Db   |  |
|  | Eb    |       | F    |       | G     |       | Ab   |  |
|  | Gb    |       | Ab   |       | Bb    |       | Cb   |  |

# Major Scale

- Look at the F# and Gb scales



What is the difference between an F# and a Gb?

What is the difference between an G# and a Ab?

What is the difference between an A# and a Bb?

What is the difference between an B and a Cb?

# Major Scale

- We have constructed all the major scales, there are no more
- You don't have to memorize the scales, you should be aware of how to construct them.

# Major Scale



*Reuse • Recycle • Rock*

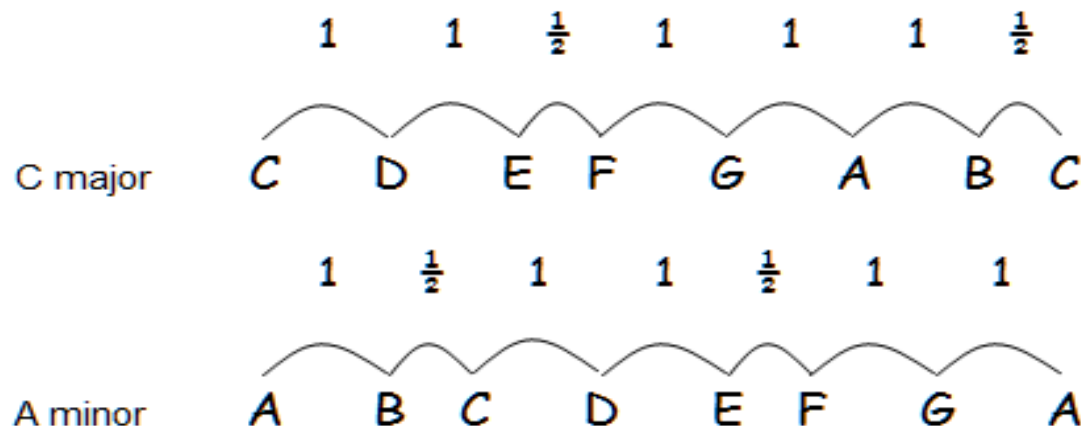
# Minor Scales

- There are three minor scales
  - Natural minor
  - Harmonic minor
  - Melodic minor

# Minor Scales

- Natural minor

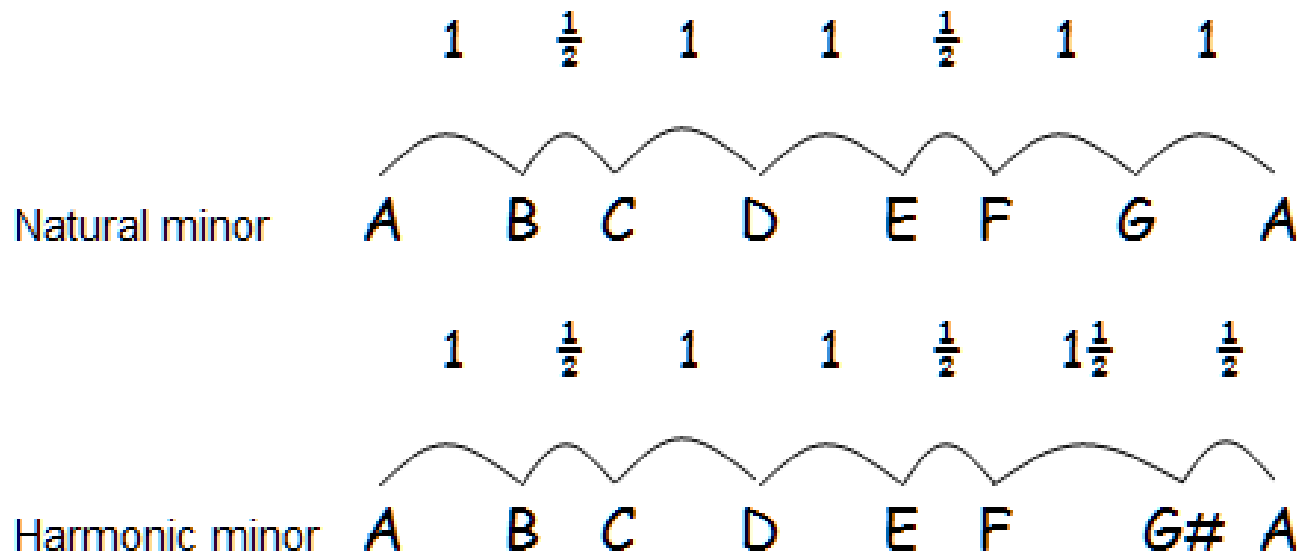
The natural minor scale is the sixth mode of the major scale major. If the notes of a C major scale are played beginning from the sixth step of that C scale, from A to an A an octave above, then an A natural minor scale (the relative minor of C) is produced.



# Minor Scales

- Harmonic minor scale

The Harmonic minor scale is the same as the natural minor but with a chromatically raised seventh degree.



# Minor Scales

- Melodic minor

The melodic minor scale is the same as the natural minor with the sixth and seventh tones are raised by a half step when the scale is ascending. When the scale is descending, the melodic minor is the same as the natural minor.

Melodic minor

Ascending

1    $\frac{1}{2}$    1   1   1   1    $\frac{1}{2}$

A   B   C   D   E   F#   G#   A

Descending

1   1    $\frac{1}{2}$    1   1    $\frac{1}{2}$    1

A   G   F   E   D   C   B   A

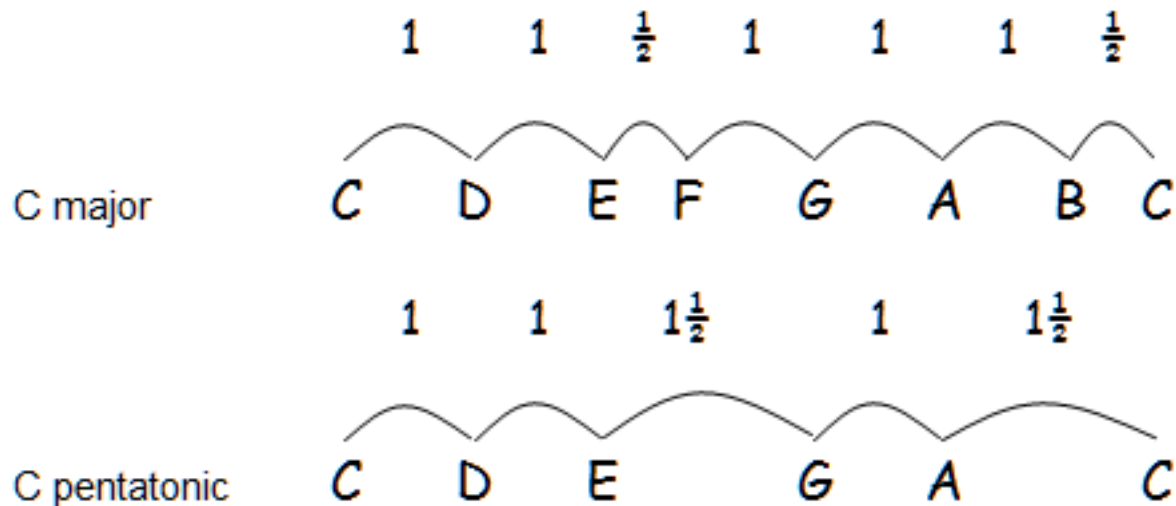
# Minor Scale



*Reuse • Recycle • Rock*

# Pentatonic Scale

- The Pentatonic scale is the same as the Major scale with the fourth and seventh tones omitted.



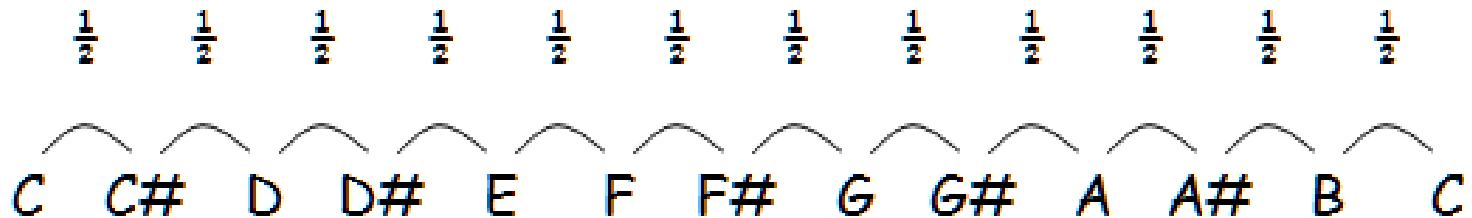
# Pentatonic Scale



*Reuse • Recycle • Rock*

# Chromatic Scale

- The Chromatic scale is 12 tones a half step apart.



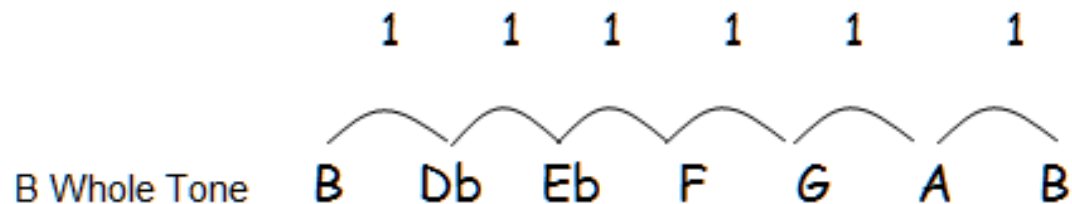
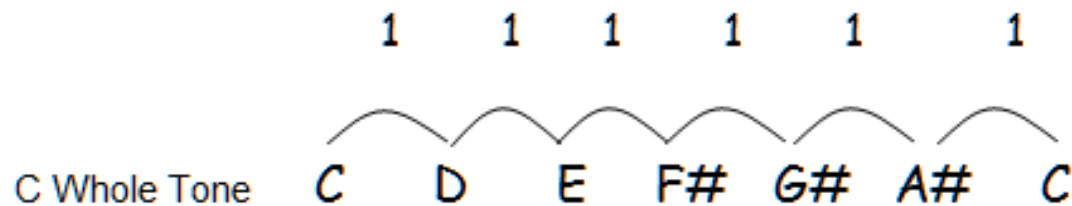
# Chromatic Scale



*Reuse • Recycle • Rock*

# Whole Tone Scale

- The Whole Tone scale is the same as the Chromatic scale six tones a whole step apart.
- There are only two whole tone scales C and B.



# Whole Tone Scale



*Reuse • Recycle • Rock*

# Scales

End of presentation



*Reuse • Recycle • Rock*

# Music Go Round Instructor

George Chapman

heavythumb@yahoo.com

507-429-5504



*Reuse • Recycle • Rock*